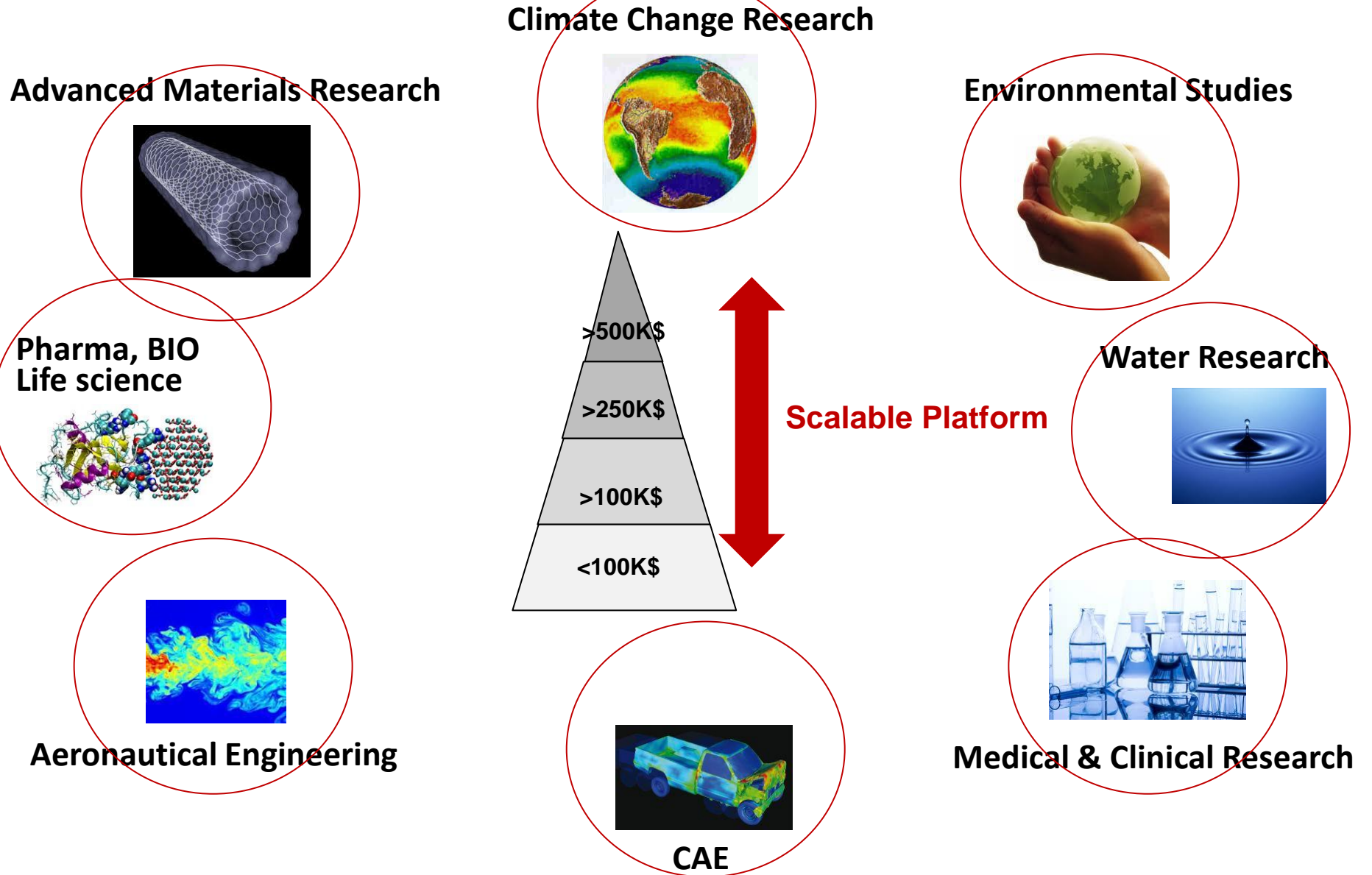


# FUJITSU HPC in 2012

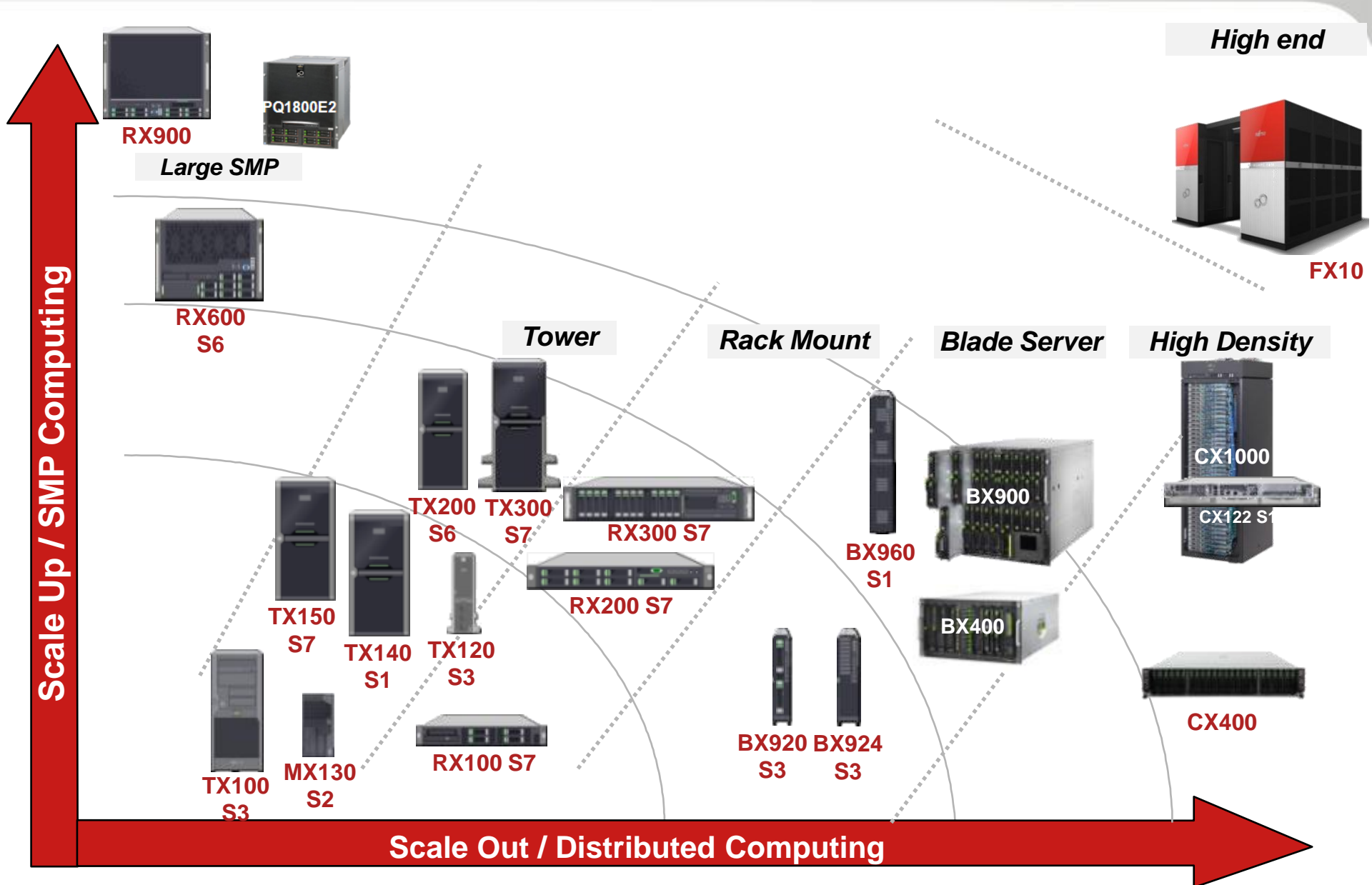
Wednesday 27 June 2012

Global HPC Office

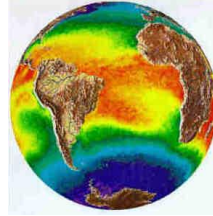
Naoya Tamura



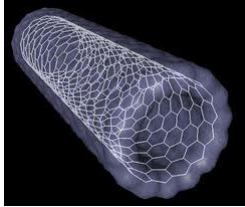
# Scalable platform for application sweet spot



## Climate Change Research



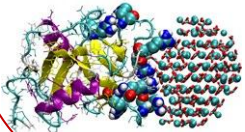
## Advanced Materials Research



## Environmental Studies



## Pharma, BIO Life science

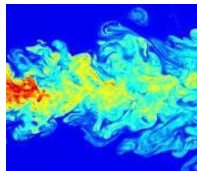


## Water Research



Increasing HPC population

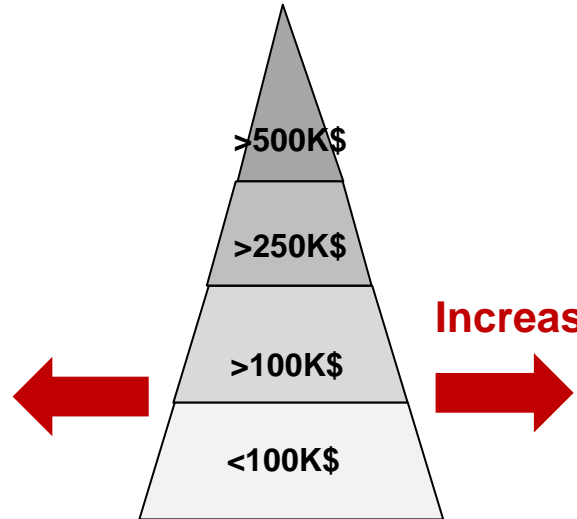
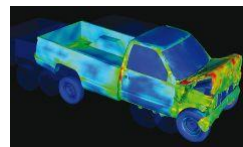
## Aeronautical Engineering



## Medical & Clinical Research

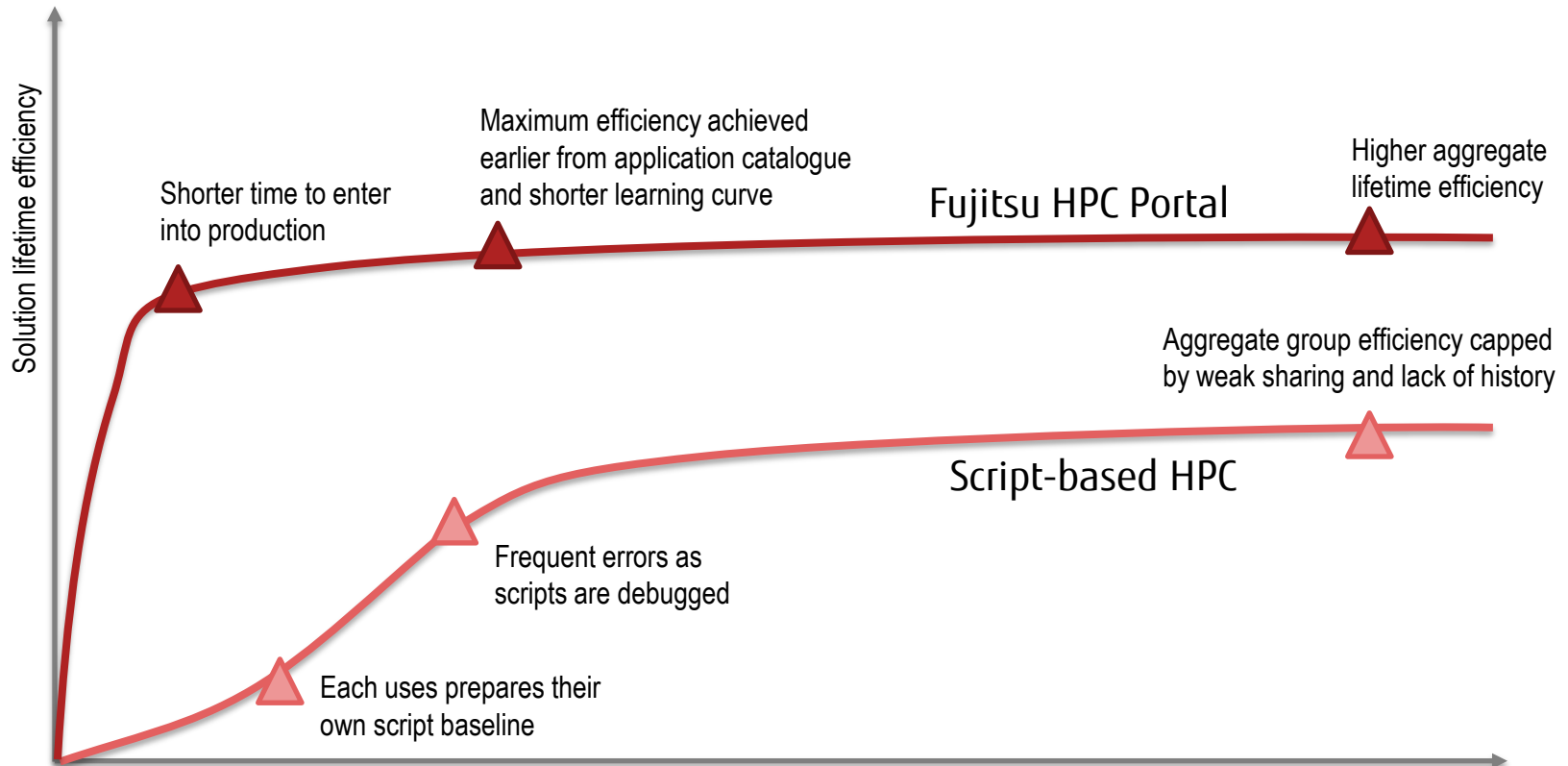


## CAE

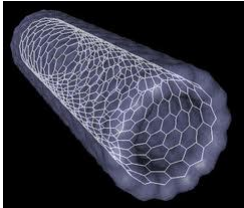


# HPC Simplicity – In-built Expertise

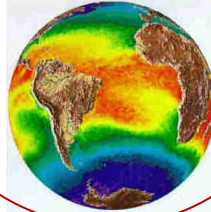
- Fujitsu HPC Portal for solution lifetime efficiency
  - Faster time to value from initial solution deployment
  - Increased aggregate efficiency over solution lifetime – machine, people



**Advanced Materials Research**



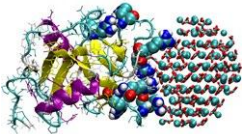
**Climate Change Research**



**Environmental Studies**



**Pharma, BIO  
Life science**



**Water Research**



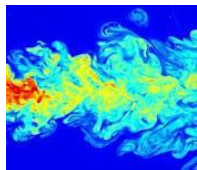
>500K\$

>250K\$

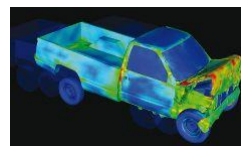
>100K\$

<100K\$

**Break through for  
EXA Scale computing**



**Aeronautical Engineering**



**CAE**

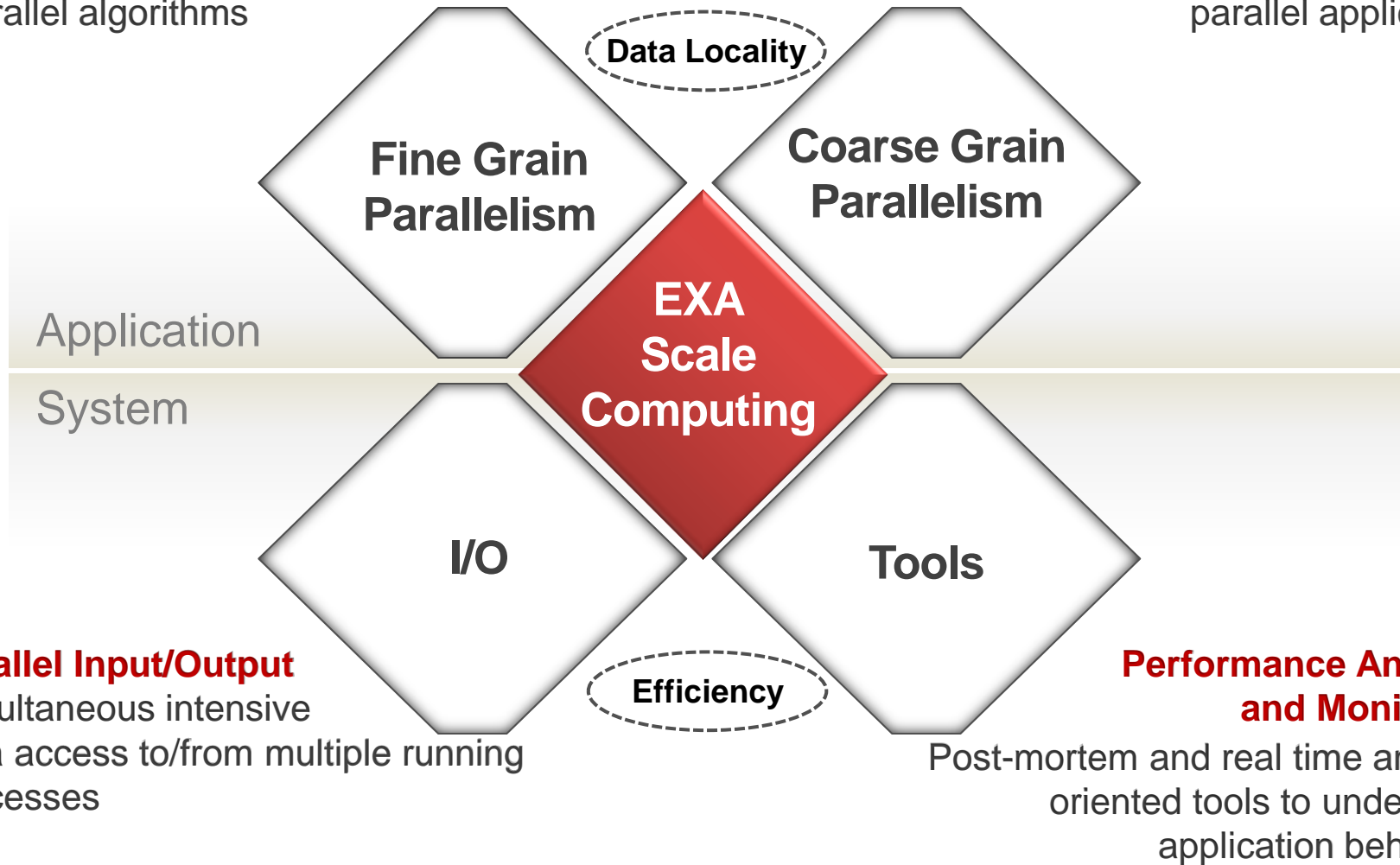


**Medical & Clinical Research**

# Towards EXA Scale computing

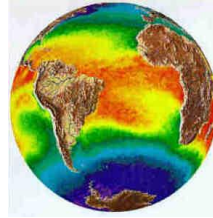
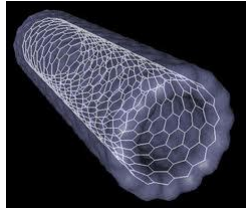
**Intra-process** parallelization  
OpenMP and/or Pthread  
medium scale based  
parallel algorithms

**Inter-process** parallelization, MPI or  
Parallel language  
based for massively  
parallel applications



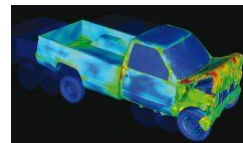
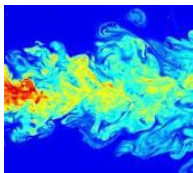
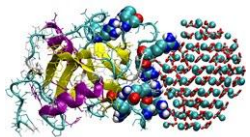
**Parallel Input/Output**  
Simultaneous intensive  
data access to/from multiple running  
processes

**Performance Analysis  
and Monitoring**  
Post-mortem and real time analysis  
oriented tools to understand  
application behaviour




**FUJITSU has opened  
Global HPC Office  
in Munich, 1st April 2012  
in order to:**

- **Boost HPC business for global HPC market**
- **Enhance HPC offering of hardware, software and solutions**







**FUJITSU**

shaping tomorrow with you